

HOLROYD

BESPOKE SURFACE HEATING ELEMENTS

APPLICATIONS:

In the UK alone, up to £200 billion worth of assets and property are at risk from flood damage, which can impact buildings for years after flooding.

To help speed up the drying process after waters have receded, we produce heaters which, when used in conjunction with dehumidifiers, can be used to evaporate moisture within buildings. This allows the area to dry significantly quicker than natural evaporation.

Our heaters mats can be applied to walls (with suitable framework) and floors to aid the drying process and are designed to target hard to reach places in particular.

These are available in a selection of standard sizes with different outputs, with bespoke specifications available on request.

MAIN POINTS:

- Reduced drying times
- Double Insulated construction.
- Low energy utilisation
- Low noise pollution
- Flexible & Lightweight
- Moisture & Chemical Resistant
- Requires no fixing to structure if placed on the floor.
- Customer branding available
- Bespoke design available



QUALITY



RELIABILITY



CREATIVITY



SERVICE



COMMUNITY

+44 (0)1799 523177

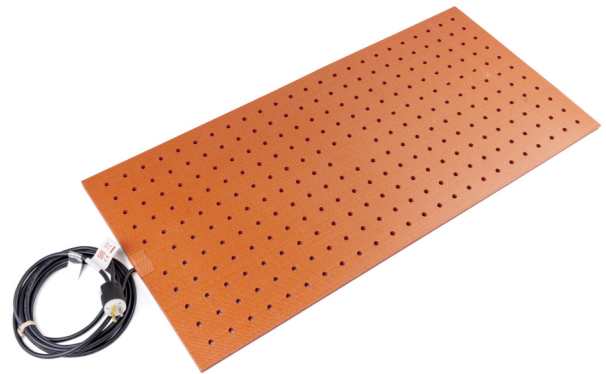
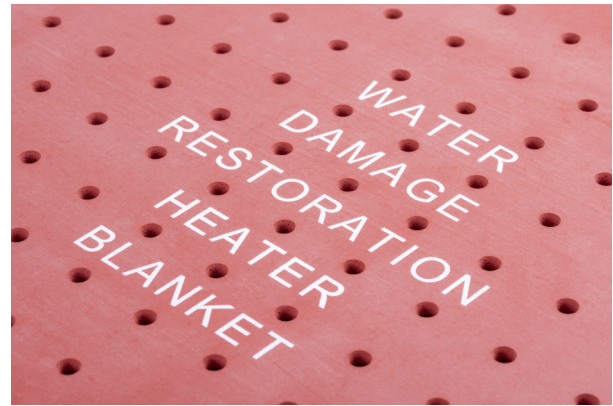
SALES@HOLROYDCOMPONENTS.COM

HOLROYD COMPONENTS LTD
SHIRE HILL INDUSTRIAL ESTATE
SAFFRON WALDEN
ESSEX CB11 3AQ



ISO9001:2015
FM558985

WWW.HOLROYDCOMPONENTS.COM



CHARACTERISTICS:

Flood repair heaters have a good resistance to the following external factors and potential contamination; photodegradation, weathering, fungus & bacteria, acetone, alcohol, formic acid, brake fluid, acetic acid, greases, hydrochloric acid 10%, sulphuric acid 10%, waxes and plasticisers.

In addition to this, the heaters have adequate gas permeability and good steam resistance up to 130°C and 2.5 bar respectively.

INTALLATION:

Our flood repair heater should be laid flat on the floor and would not require any additional fixing methods in this scenario. When placed onto a wall, additional clamping or fixing method will be required to keep the heater in place.

CONTROL:

As standard these heaters are supplied with two forms of control. A thermostat is fitted as a control device and there is also a one time 160c Fuse fitted for added protection. In addition to this the power of the heater is expertly calculated to give a steady state temperature below the control temperatures when placed on concrete floors.

For flood repair heaters standard sizes are available and should be confirmed by customer upon ordering. Holroyd’s standard sizes are listed in the table below.

Heater Dimensions	Voltage	Wattage	Temperature Control
400mm (A) x 600mm (B) SMALL	120V	140W	120c Thermostat & 160c Fuse
235mm (A) x 1000mm (B) MEDIUM	120V	200W	120c Thermostat & 160c Fuse
470mm (A) x 1000mm (B) LARGE	120V	375W	120c Thermostat & 160c Fuse